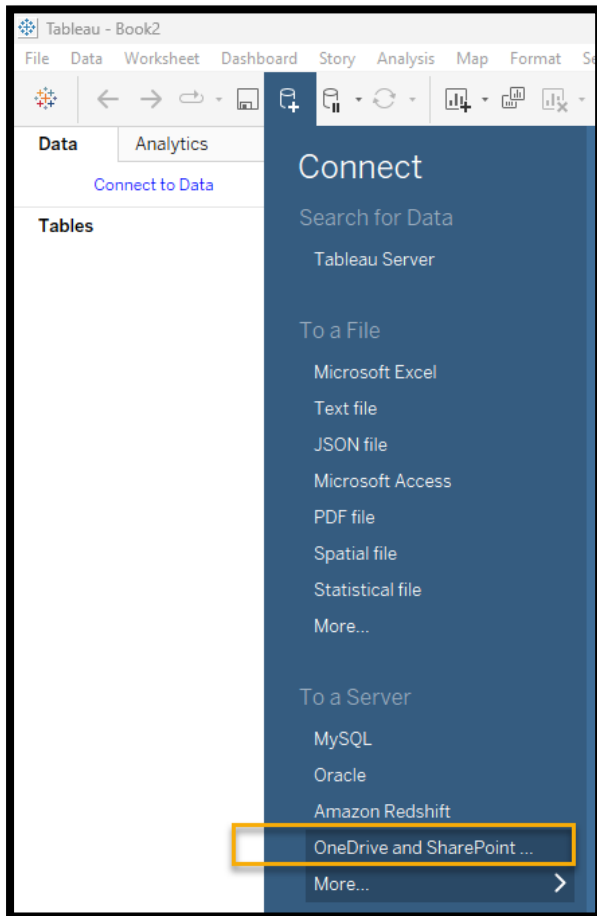
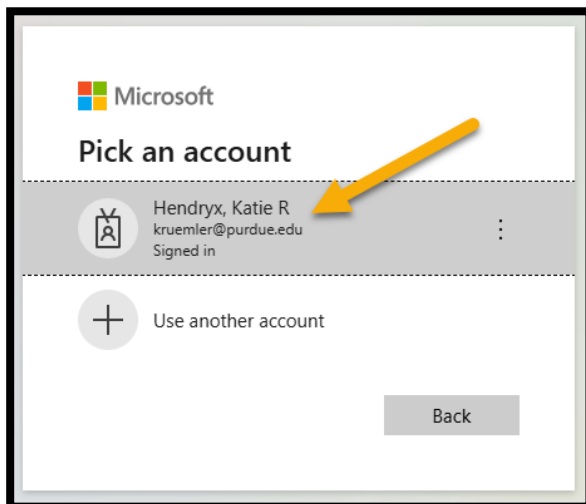


Connecting Tableau to SharePoint or OneDrive

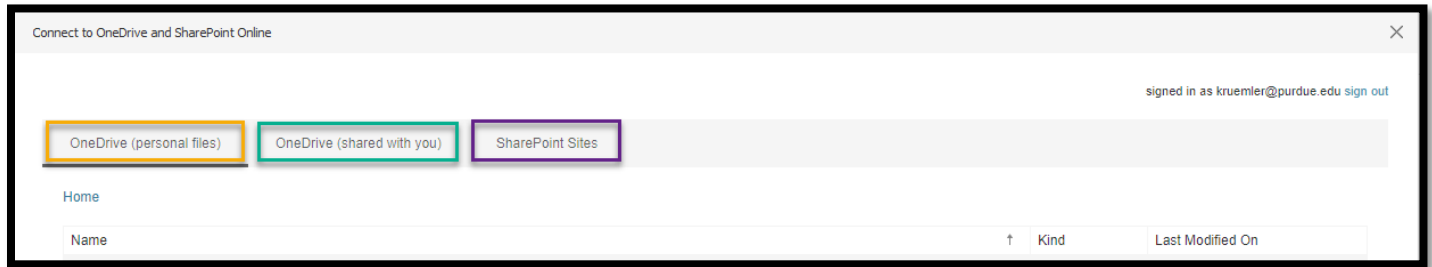
Open Tableau Desktop, under Connect find To a Server, select **OneDrive and SharePoint**.



Select your Microsoft account.



Here, you can connect to OneDrive and SharePoint Online. Choose between OneDrive (personal files), OneDrive (shared with you), or SharePoint Sites.



When selecting one of the following, please be mindful of the access users may or may not have to this space as embedding your credentials might be required.

- **OneDrive (Personal Files)** – Are files in your personal OneDrive folder.
- **OneDrive (Shared with you)** – Files that are in a shared OneDrive space.
- **SharePoint Sites** - It's best to have the Site URL available to paste in the box and select **Browse This Site** as shown below.



Choose your data and **Connect**.

